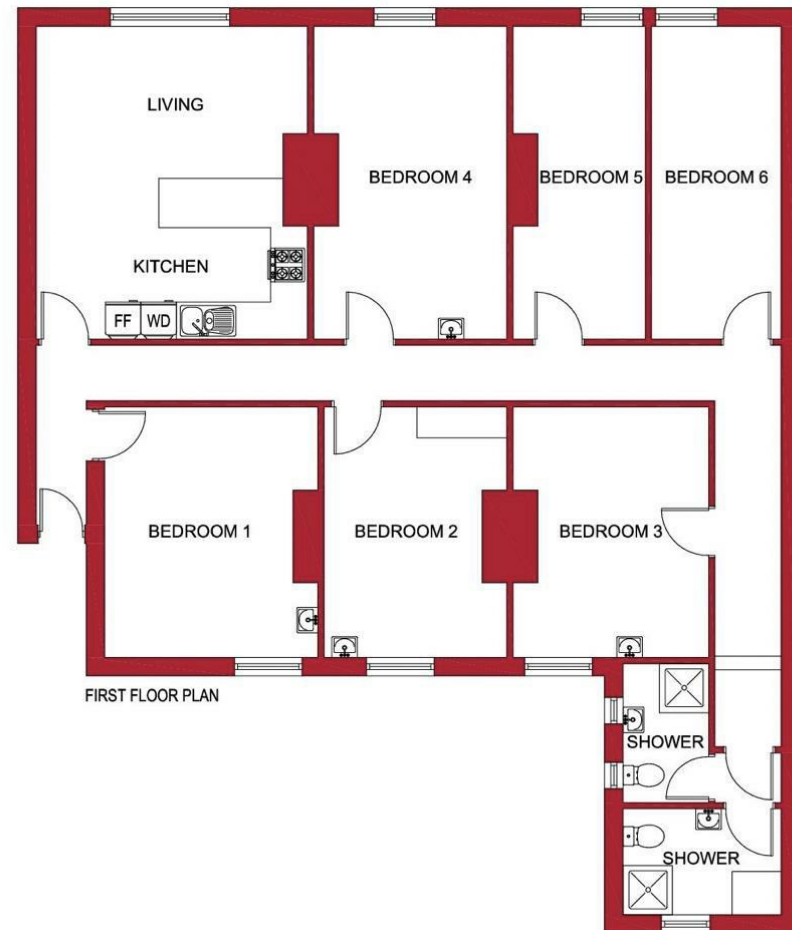




Viewings
 Viewings by arrangement only.
 Call 0114 2666300 to make an appointment.

Vendors Comments
 Add text here

Energy Efficiency Rating		Current	Potential
Very energy efficient - lower running costs			
(92 plus)	A		
(81-91)	B		
(69-80)	C	71	77
(55-68)	D		
(39-54)	E		
(21-38)	F		
(1-20)	G		
Not energy efficient - higher running costs			
England & Wales		EU Directive 2002/91/EC	



Room 5, 294a Ecclesall Road, Sheffield, S11 8PE

£450 Per month

- Large double room available
- £110 per week to include all bills
- Two bathrooms
- Close to an abundance of local amenities
- EPC Grade C
- Shared six bedroom property
- STUDENT property available from 1st July 2025
- Excellent location on Ecclesall Road
- Ideal for students studying at Sheffield Hallam University

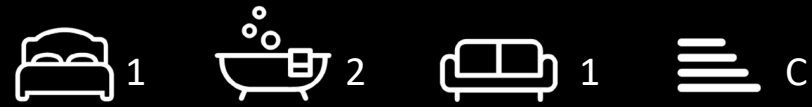
Room 5, 294a Ecclesall Road, Sheffield S11 8PE

*** STUDENT *** £110 PER WEEK, TO INCLUDE ALL BILLS ***

LARGE DOUBLE BEDROOM in a SHARED, six bedroom property available to STUDENTS, with TWO BATHROOMS.

A VERY WELL LOCATED, six bedroom APARTMENT close to an abundance of local amenities and situated in the HIGHLY SOUGHT AFTER location off ECCLESALL ROAD.

In brief the accommodation comprises: open plan lounge / kitchen, large double bedroom and two bathrooms. An early viewing is highly recommended to avoid disappointment! EPC Grade C.



Council Tax Band: A

